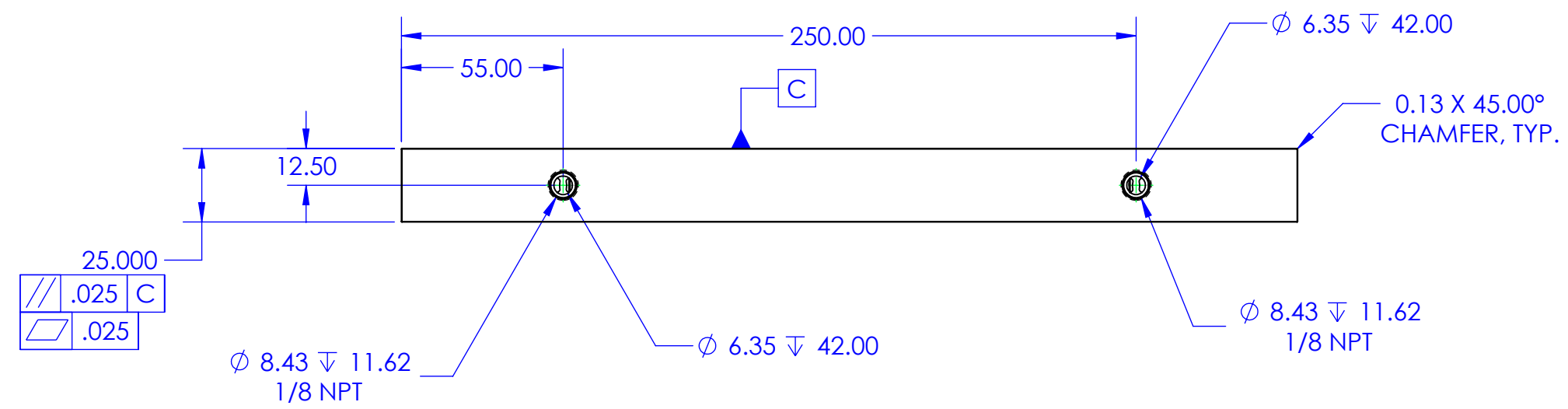
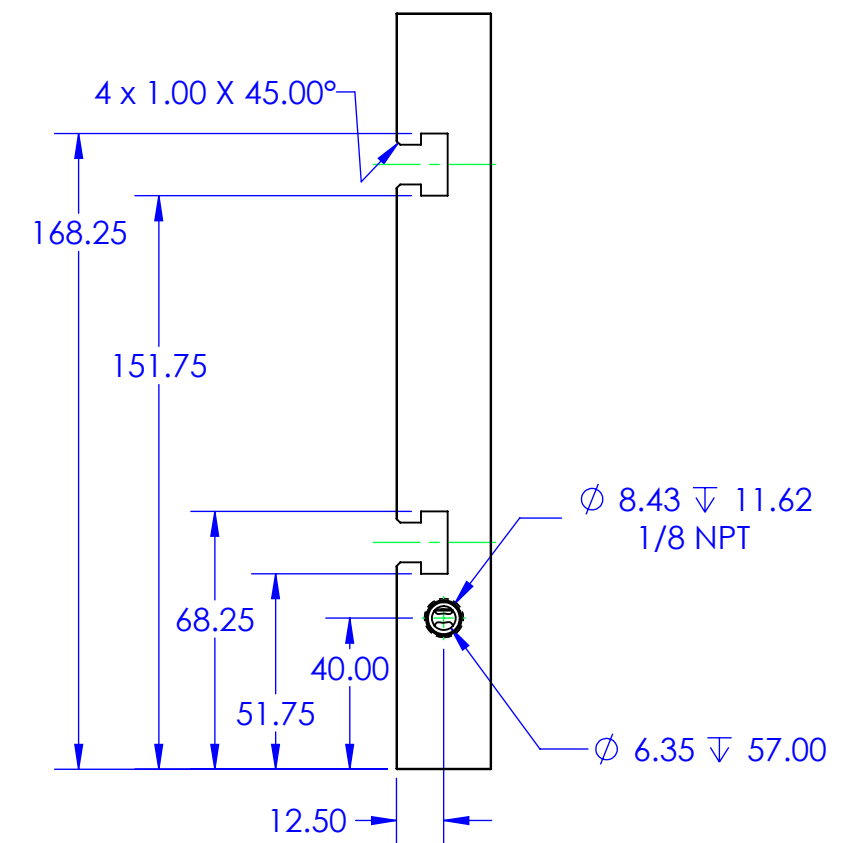
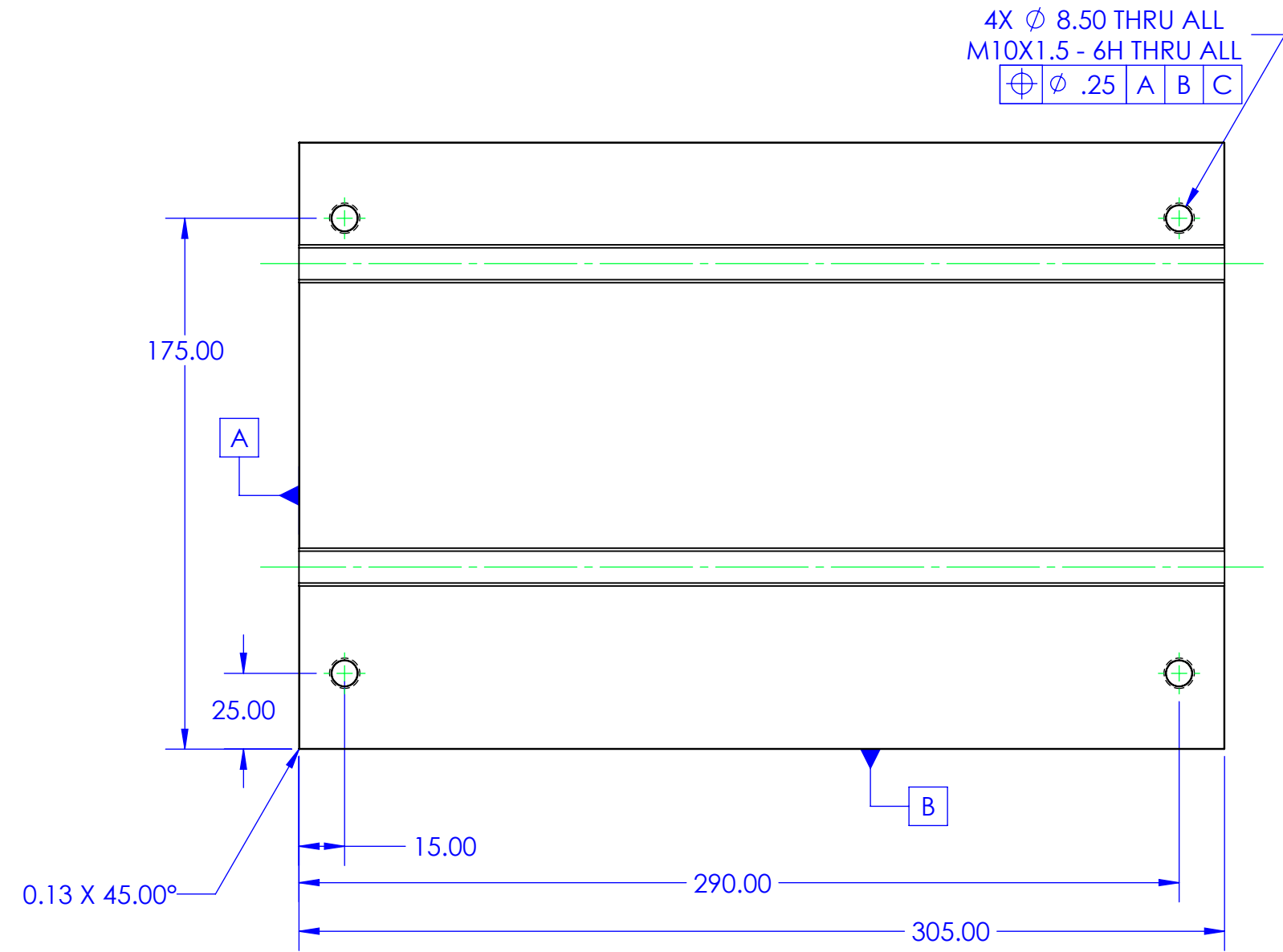
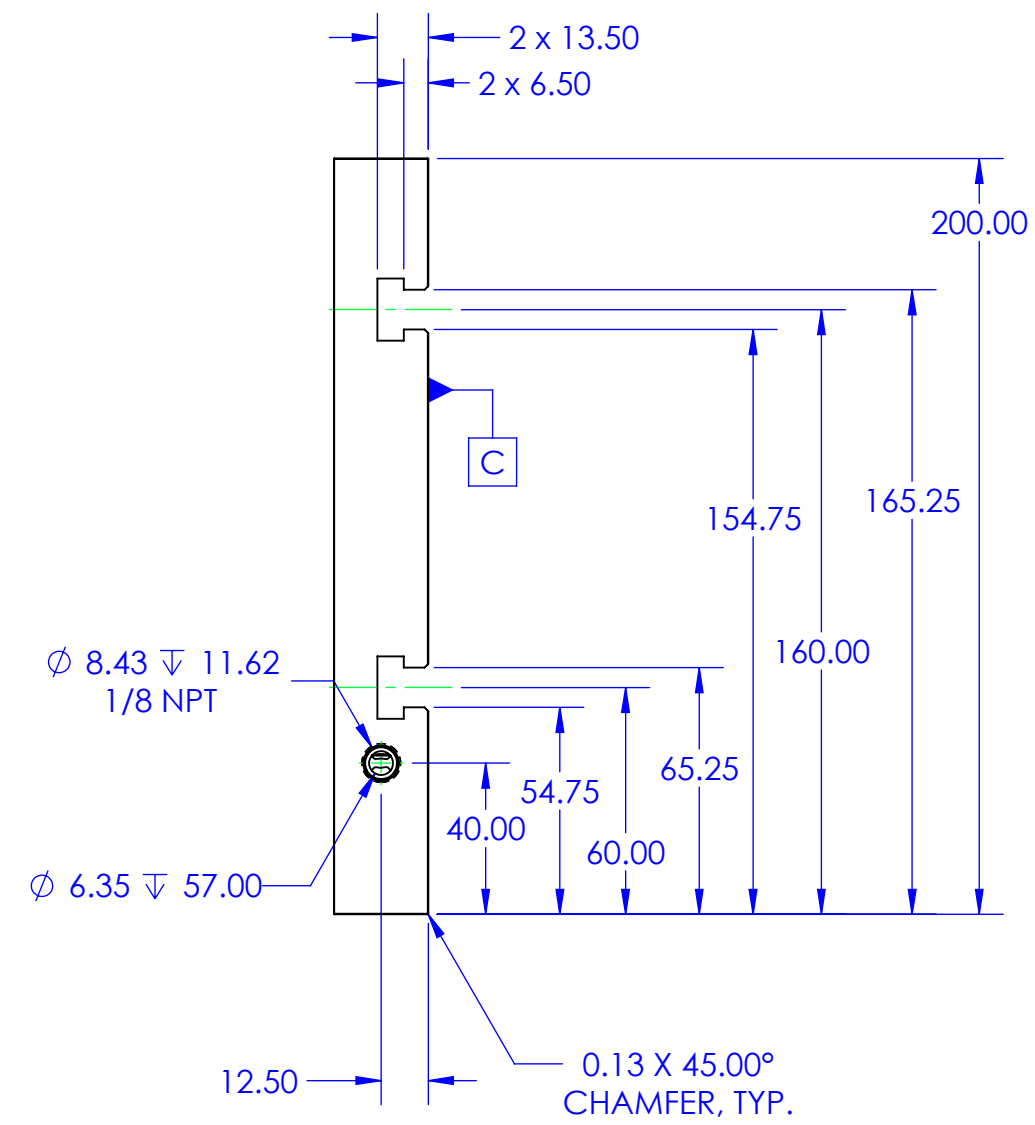
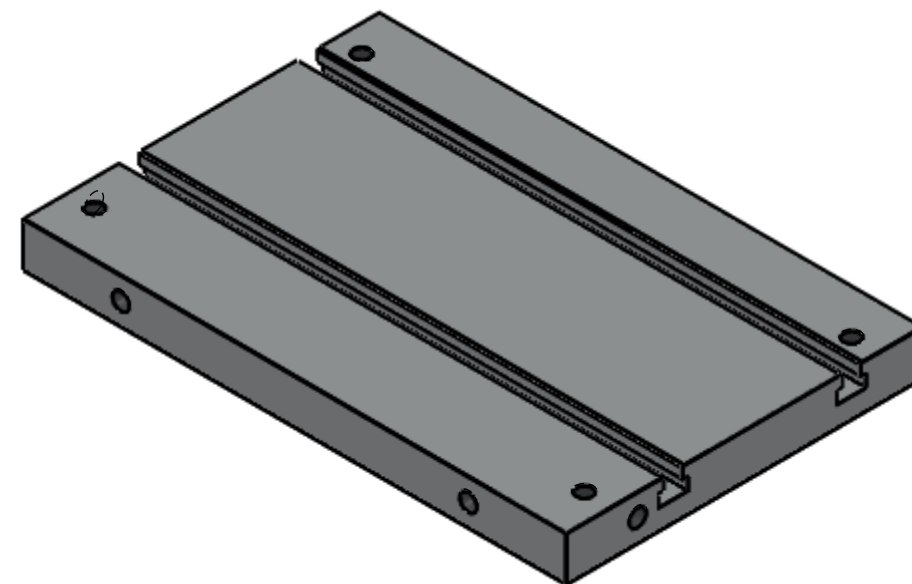


REV	DESCRIPTION OF CHANGES	DATE	APPROVED
02	CORRECTED M10 THREADED HOLE CALLOUT	09/02/2015	CEB



NOTES (UNLESS OTHERWISE SPECIFIED):

- 1 - 6061-T6 OR 7075-T6 ALUM
- 2 - FOR USE ON 6000/6200



Proprietary Notice: This drawing and the information contained herein is the property of Moldman Systems and may not be reproduced or used for other purposes than authorized by Moldman Systems.

UNLESS OTHERWISE SPECIFIED DIMENSIONS ARE IN MM [INCHES]. TOLERANCES ARE:
 DECIMALS: .X: +/- 0.7 X: +/- 0.5*
 .XX: +/- 0.25 X.X: +/- 0.1*
 .XXX: +/- 0.127
 .XXXX: +/- 0.0127

CAD GENERATED DRAWING : DO NOT MANUALLY UPDATE

MOLDMAN SYSTEMS
 9290 Prototype Dr. Reno, NV 89521
 (775) 332-1600 fax: (775) 332-1601

DO NOT SCALE DRAWING

TITLE: 6X00 Upper Adapter Plate - 56mm Base REV02
 PART NUMBER

MATERIAL: SEE NOTES

APPROVALS DATE

FINISH: SEE NOTES

CREATED **CEB** 4/10/2015 SIZE
 CHECKED

DRAWING SCALE: n/a
 SHEET 1 OF 1

REV. 02