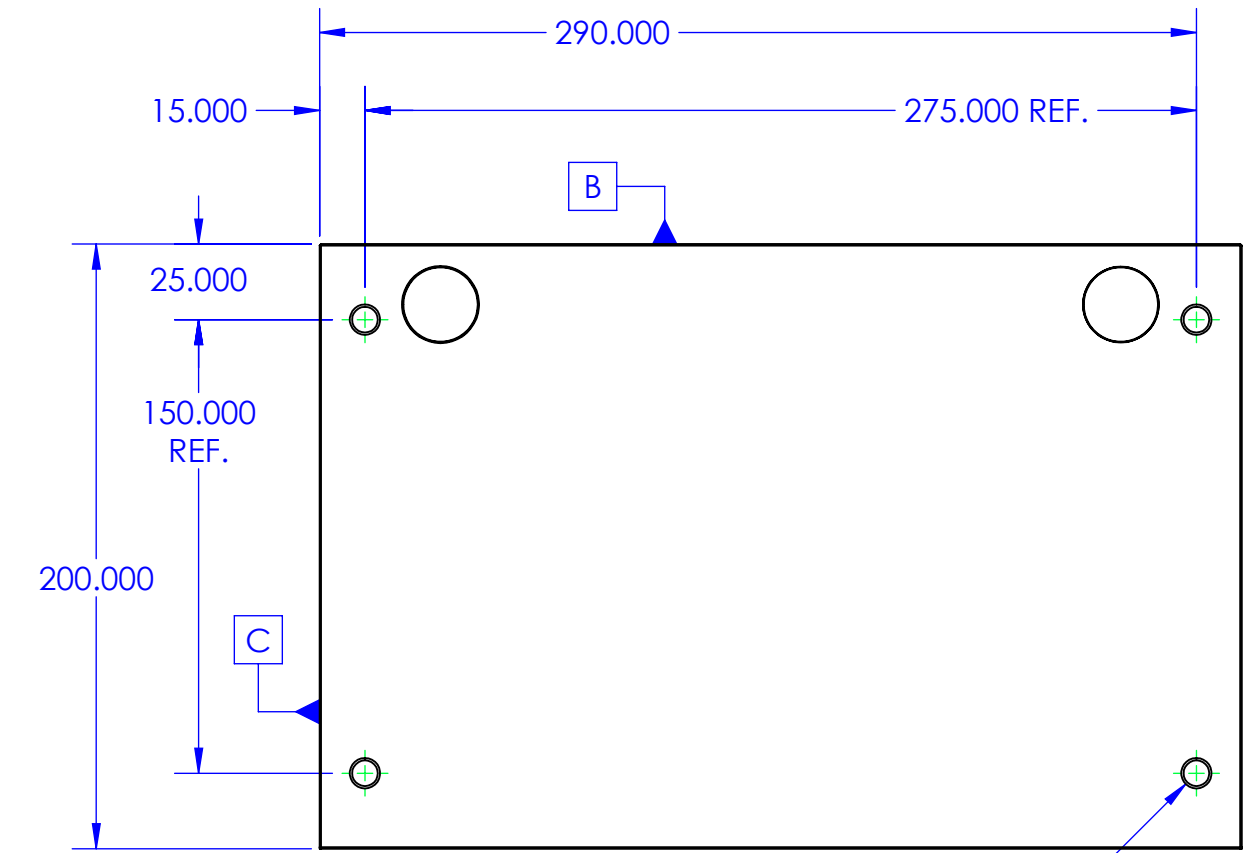
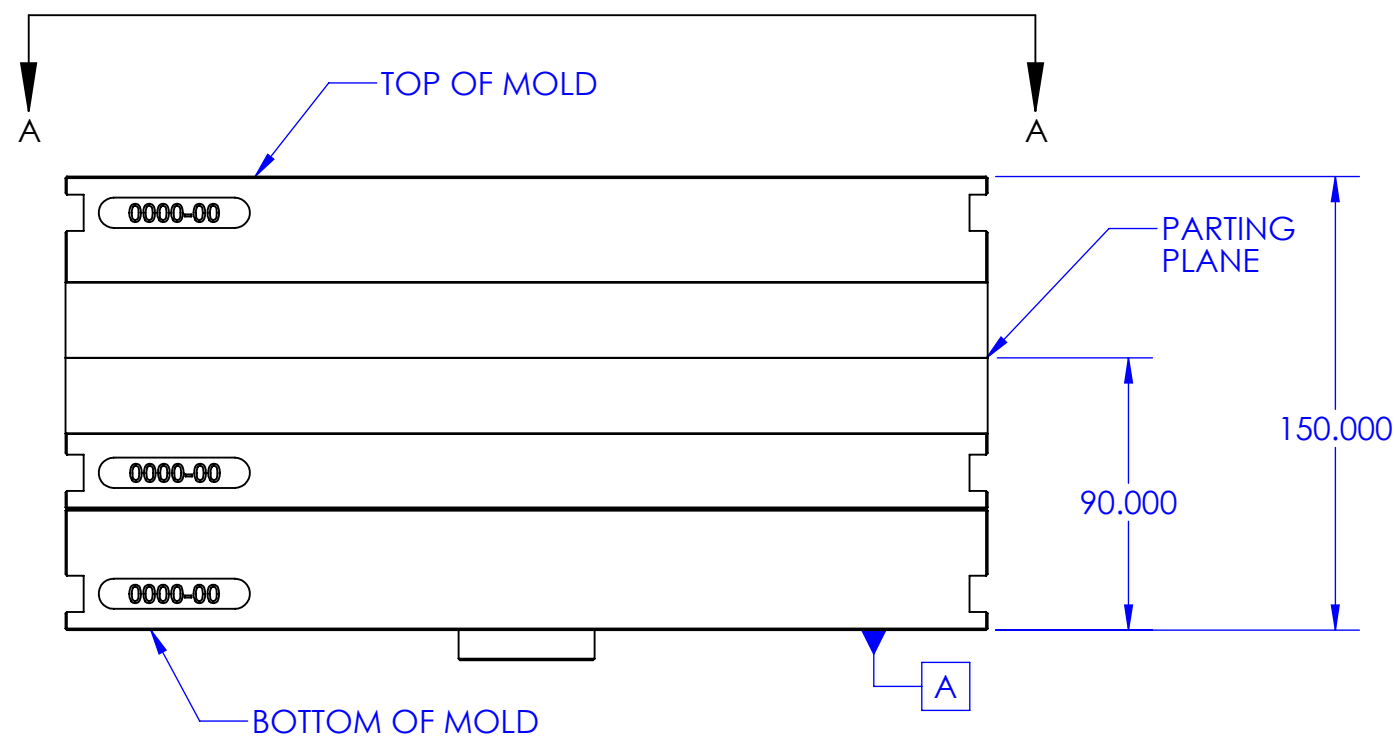
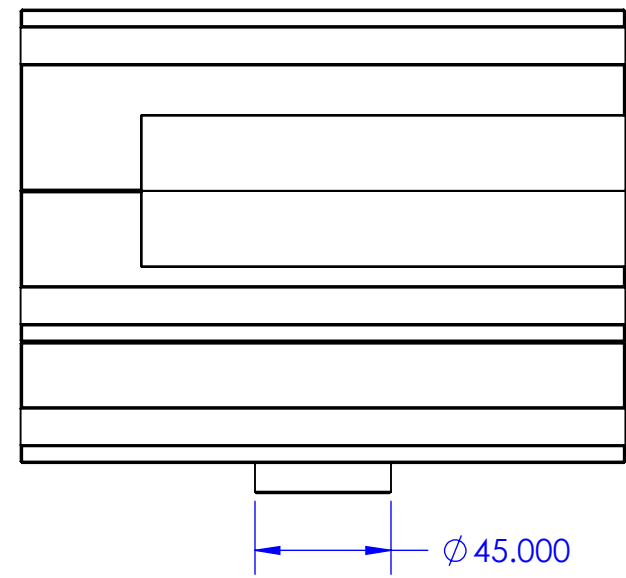
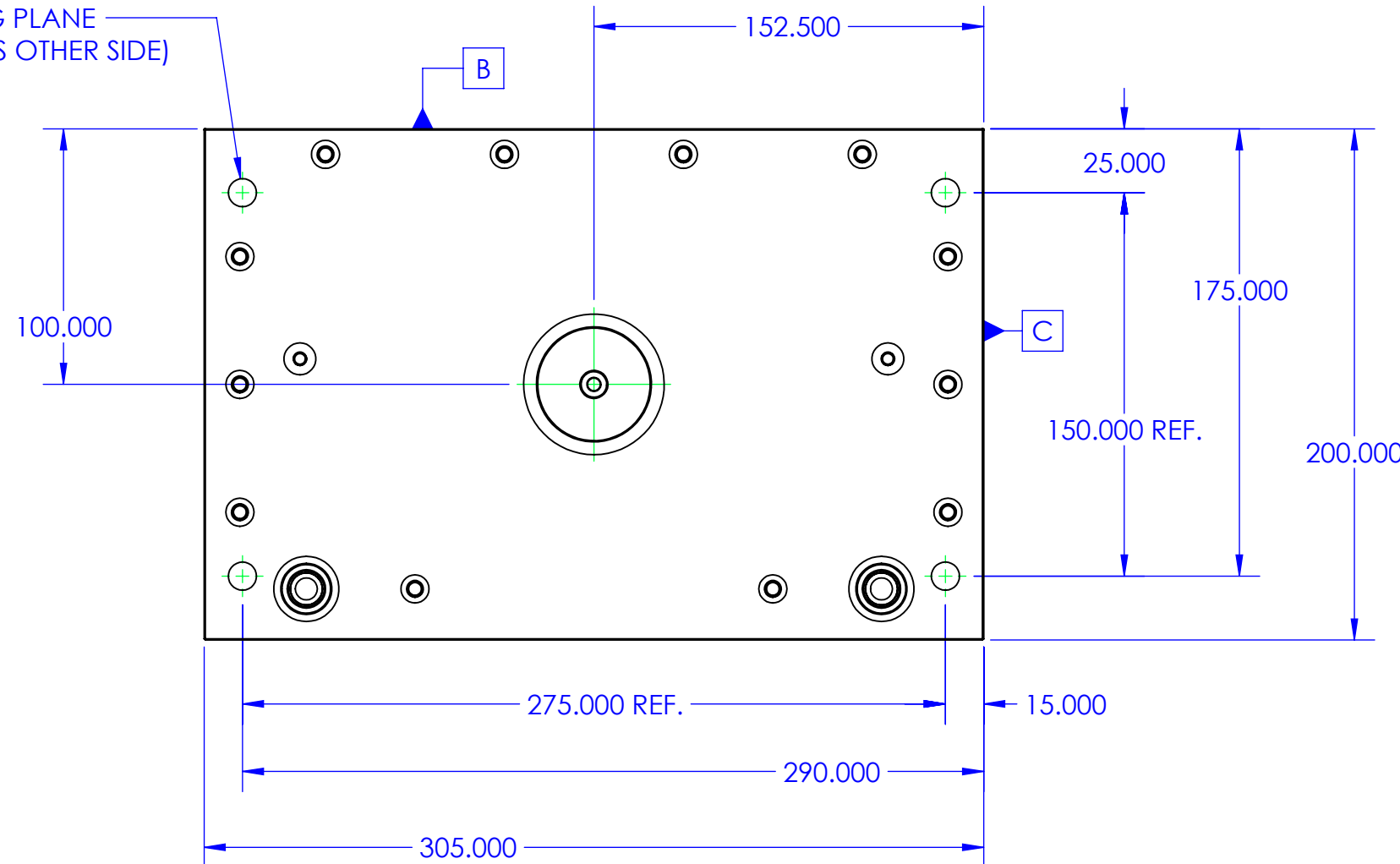


| REV | DESCRIPTION OF CHANGES | DATE | APPROVED |
|-----|-----------------------------------|------------|----------|
| 02 | ADDITIONAL CLARITY OF ANNOTATIONS | 10/19/2018 | CEB |



4 x ϕ 11.000
THRU TO PARTING PLANE
(C'BORE FOR M10 SHCS OTHER SIDE)



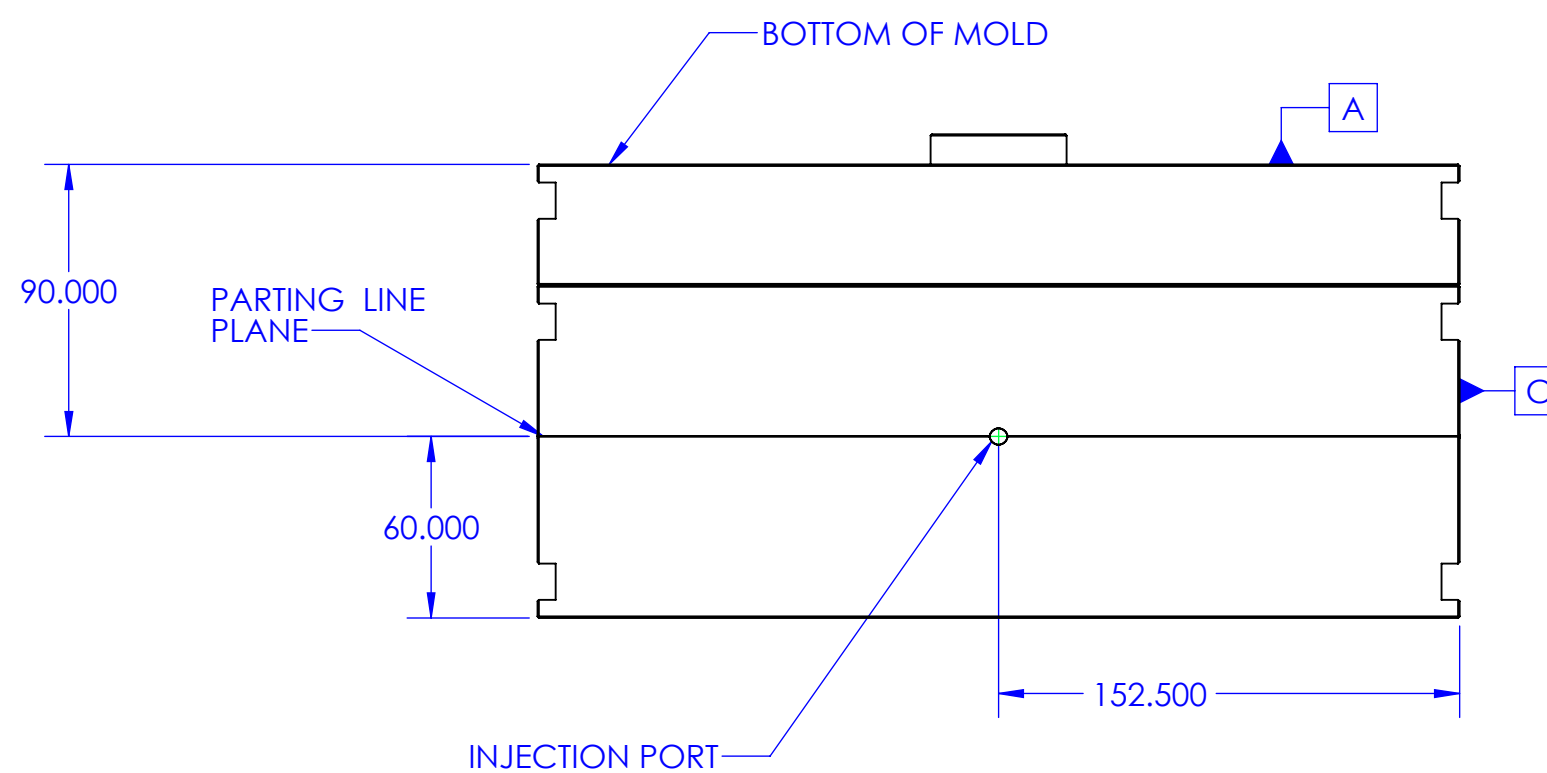
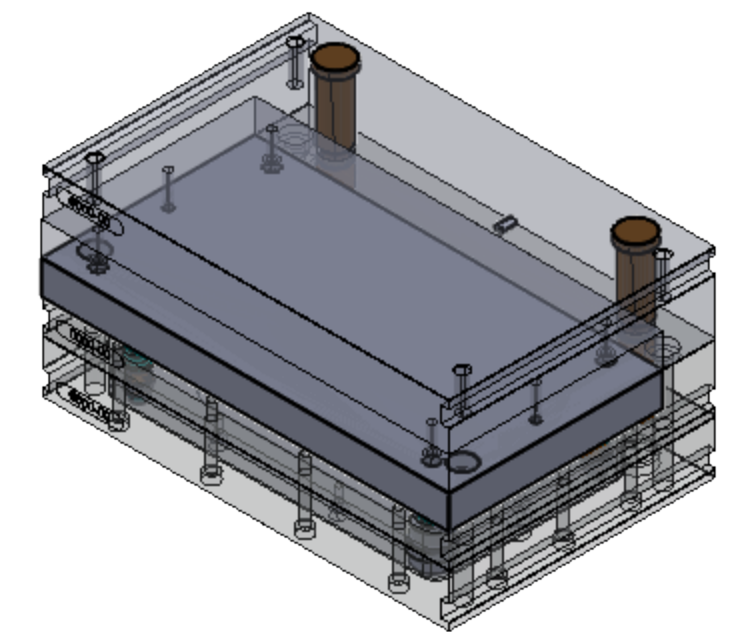
4 x M10 - 6H
 ∇ 20.000 THREAD DEPTH

VIEW A-A

NOTES (UNLESS OTHERWISE SPECIFIED):

1 - ALL DIMENSIONS FOR REFERENCE ONLY

2 - SURFACE [A] IS IN CONTACT WITH MACHINE LOWER PLATEN. IT IS ALSO THE BOTTOM OF THE MOLD. MACHINE NOZZLE CENTERLINE HEIGHT ABOVE PLATEN SURFACE IS 90.0 mm



Proprietary Notice: This drawing and the information contained herein is the property of Moldman Systems and may not be reproduced or used for other purposes than authorized by Moldman Systems.

UNLESS OTHERWISE SPECIFIED DIMENSIONS ARE IN MM.
TOLERANCES ARE:
DECIMALS: .X : +/- 0.7
.XX : +/- 0.25
.XXX : +/- 0.127
ANGLES: X : +/- 0.5°
X.X : +/- 0.1°

CAD GENERATED
DRAWING :
DO NOT
MANUALLY
UPDATE

MOLDMAN SYSTEMS
4649 Aircenter Dr. Ste 101, Reno, NV 89521
(775) 332-1600 fax: (775) 332-1601

MATERIAL: SEE NOTES

FINISH: SEE NOTES

APPROVALS: _____ DATE: _____
CREATED: CEB 5/11/2015
CHECKED: / /

TITLE: 305x200 6200 INJECTION MOLDSET
PART NUMBER: _____

DRAWING SCALE: n/a
SHEET 1 OF 1
REV. 02