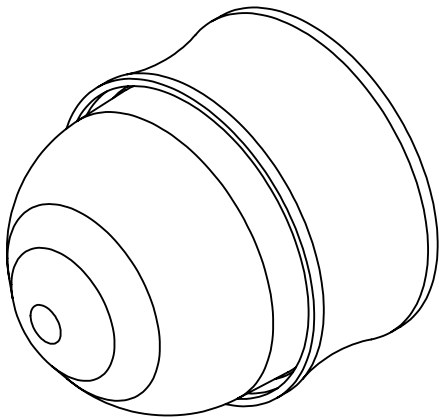
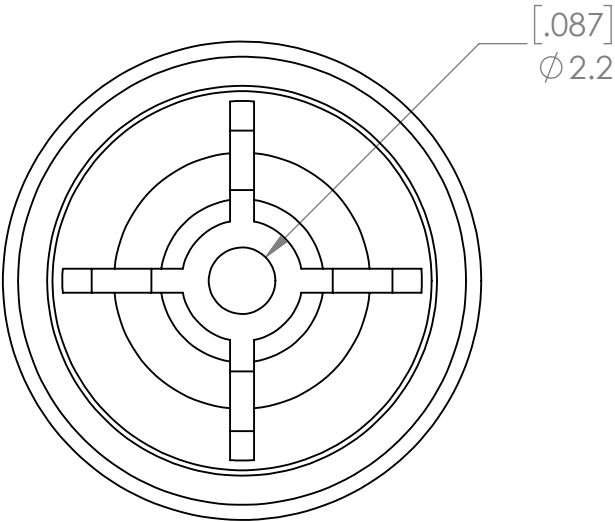
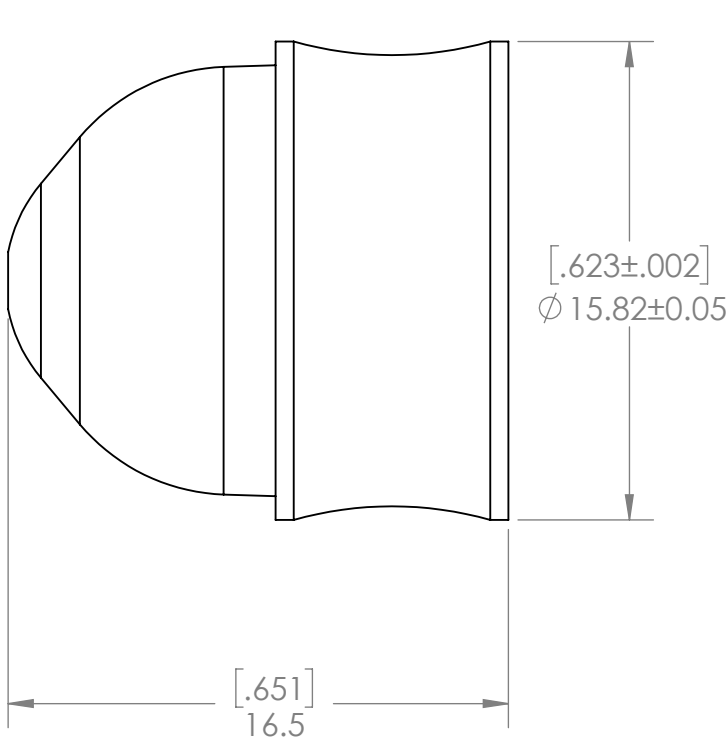


NOTES - UNLESS OTHERWISE SPECIFIED:

- 1. MATERIAL: HIGH DENSITY POLYETHYLENE (HDPE)
- 2. DIMENSIONS IN mm (INCHES)
- 3. APPEARANCE: GREEN IN COLOR
- 4. FINISH: CLEAN & FREE OF MOLDING FLASH



PROPRIETARY AND CONFIDENTIAL
THE INFORMATION CONTAINED IN THIS
DRAWING IS THE SOLE PROPERTY OF
FISNAR. ANY REPRODUCTION IN PART OR
AS A WHOLE WITHOUT THE WRITTEN
PERMISSION OF FISNAR IS PROHIBITED.

PRODUCT:	QUANTX
END ITEM:	
NEXT ASSY:	
SIMILAR TO:	
APPLICATION	

UNLESS OTHERWISE SPECIFIED:
DIMENSIONS ARE IN MILLIMETERS
TOLERANCES:
ANGULAR: MACH $\pm 1/2$
ONE PLACE DECIMAL $\pm .25$
TWO PLACE DECIMAL $\pm .13$
BREAK EDGES .15/.25

INTERPRET GEOMETRIC
TOLERANCING PER: ANSI Y14.5M

MATERIAL
HIGH DENSITY
POLYETHYLENE
(HDPE)
DO NOT SCALE DRAWING

APPROVED BY	CURRENT	INITIAL
DRAWN	RC	RC
CHECKED		
ENG APPR.		
MFG APPR.		
DATE	04/06/22	04/06/22

FINISH - UNLESS OTHERWISE SPECIFIED:

TOL $< \pm .2$	TOL $\geq \pm .2$
1.6	3.2



TITLE:
QUANTX SMOOTHFLOW
10CC PISTON - GREEN

SIZE	DWG. NO.	REV
B	8001008	1

SCALE: 4:1	WT LBS:	SHEET 1 OF 1
------------	---------	--------------